

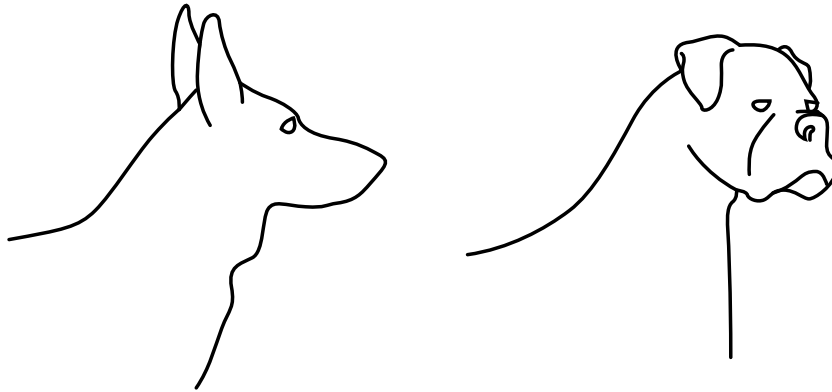
Artificial Selection

Artificial selection happens when people select individuals to mate that have features they hope the offspring will inherit. This is also called selective breeding.

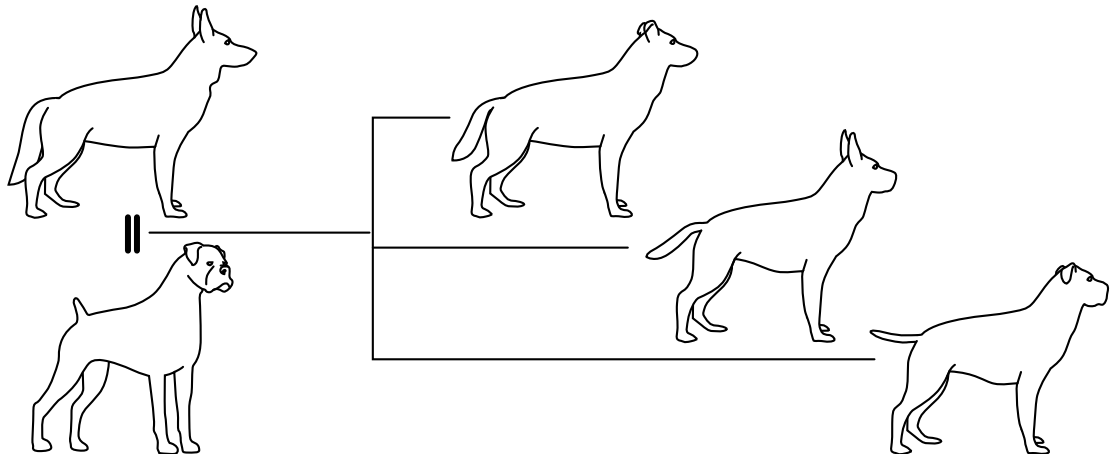
Here is what is required:



V = Variation: The differences that exist among individuals. Many of these differences are determined by their genes.

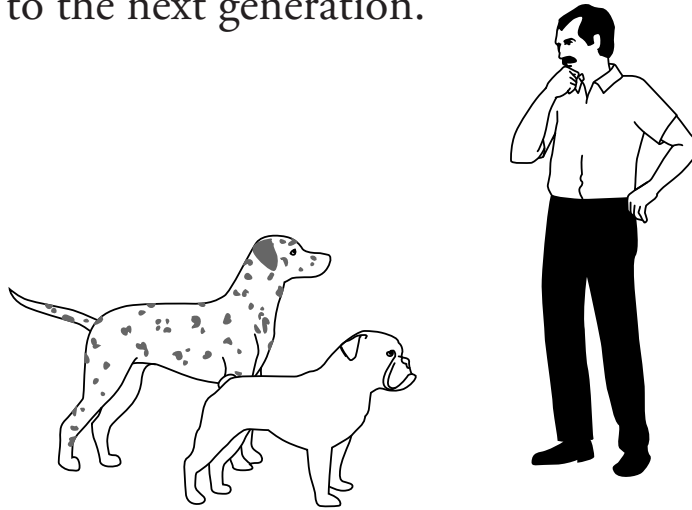


I = Inheritance: Genetic traits are inherited from parents and are passed on to offspring.

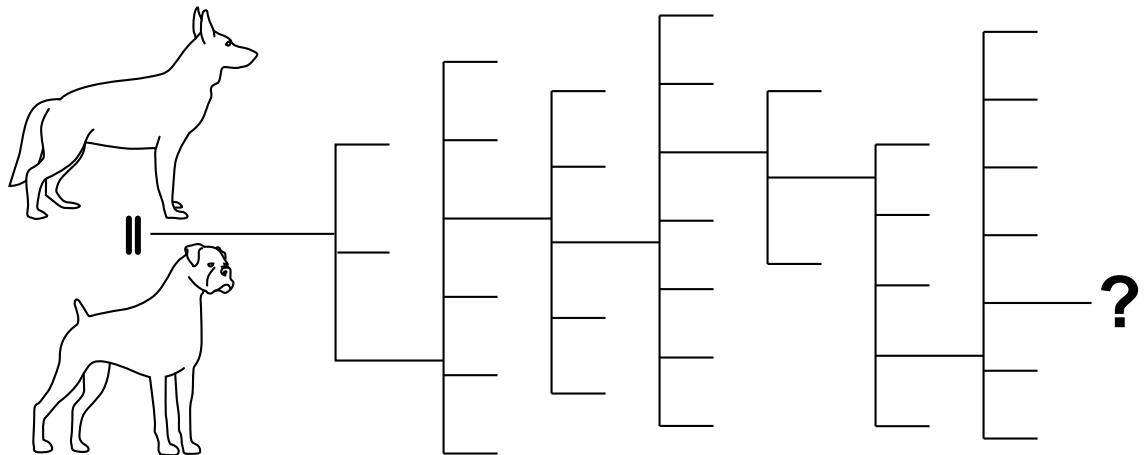




S = Selection: In artificial selection, individuals with favorable traits are bred in the hopes that those traits will be passed on to the next generation.



T = Time: Getting the desirable features does not usually happen in just one try. Often, you have to breed many generations to get a new breed established.



Remember **VIST** (use the puzzle pieces to write out “**VIST**”) to remember how selection works!

VIST puzzle pieces courtesy of the *Understanding Evolution* website, <http://evolution.berkeley.edu>, of the University of California Museum of Paleontology.