



## Director's Letter from Charles Marshall

### Securing UCMP's long-term future

I have been Director of UCMP for eight and a half wonderful years. During this time my appreciation for UCMP has continued to deepen as I have better understood the impact UCMP curators, staff, graduates, and volunteers have had over the years. What an amazing place!

While my pride in UCMP has steadily increased, sadly, campus support for UCMP has steadily decreased, driven

by Berkeley's ongoing financial woes. Fortunately, *very fortunately*, thanks to your gifts, UCMP has been somewhat buffered from the rolling cuts of the last decade. Most recently, in no small part due to your letters and signatures earlier this year, the proposed campus cut for this fiscal year was reduced by half. Nonetheless, we are beyond being cut to the bone, unable to replace our retiring collections staff.

In the long run, UCMP's future will hinge on the strength of our endowments. Annie Alexander recognized this, founding UCMP with a major endowment in 1921. Her endowment has since grown 50-fold and is now our largest single source of income. More recently established endowments, including the Welles, Gregory, Honorary Barnosky, and Berry Funds (thanks to all of you who initiated and supported these endowments), all but guarantee support for graduate and undergraduate student field work and research expenses in perpetuity. But that is not enough.

We already rely on short-term grants to intermittently staff the fossil prep lab, and the cuts of the last four years have meant the loss of two museum scientist positions.

Simply, UCMP needs to increase its endowments, by ~\$18 million to gain full financial independence at our current staffing levels. This is a lofty goal. However, since 2010, largely through gifts left in the estates of passing alumni, UCMP has increased its Main Endowment (FU0961000) by ~\$2 million, with another ~\$7 million in current pledges. So I believe the goal of ~\$9 million still needed *is achievable*.

I would love to hear from you with your ideas, strategies, contacts, gifts and pledges, as we work towards securing the long-term future of this great, great institution. Please feel free to contact me anytime.

Yours in deepest appreciation,  
Charles

## What's New in Education & Outreach from Lisa White

As I begin my 7th year as Assistant Director of Education and Public Programs at the UCMP, I'm happy to report that my efforts to reach more diverse audiences with UCMP educational resources are starting to bear fruit. As the UCMP increasingly relies on external funds to support education and outreach programs, four new and continuing NSF awards received over the past two years, totaling more than \$450,000, establish new and unique institutional

partners to serve a wider range of educators and students.

### A-STEP (Ambassadors for STEM Training to Enhance Participation, NSF) Target Group: Underrepresented graduate students in STEM

This is a new three-year NSF collaborative grant with the International Ocean Discovery Program (IODP), Columbia and Stanford Universities, which expands the IODP School of Rock program that took place in New Zealand last summer. Underrepresented graduate students in STEM who  
...continued on Education and Outreach Page 2



Lisa White at Rangitoto Island Scenic Reserve in New Zealand, photo courtesy Lisa White.

...continued from Education and Outreach Page 1

want to strengthen their science communication skills can apply to sail on the JOIDES Resolution research vessel between major science expeditions. They will develop Earth systems science learning materials, using UCMP's *Understanding Science* "How Science Works" flowchart, now available as an online interactive and journaling tool (see below). This is used to generate digital maps on the nature and process of science, IODP research and the student ambassadors' newly acquired knowledge.

### FIELD (Fieldwork Inspiring Expanded Leadership and Diversity, NSF)

**Target Group: Early career faculty**

Field research training entailed by undergraduate geoscience degree requirements is being increasingly shaped by demands to be more interdisciplinary, accessible, and inclusive. As a result of my participation in a 2016 NSF Ideas Lab on Geoscience Opportunities for Leadership in Diversity (GOLD), I am co-leading a unique field institute. Funded by a two-year collaborative grant from the NSF with five other universities, FIELD targets early career faculty who are hoping to transform field learning experiences in geology, paleontology and/or marine science in order to draw a greater diversity of participants.

### BLUE Data (Biodiversity Literacy in Undergraduate Education - Data Initiative, NSF)

**Target Group: Undergraduate students in biology**

As museums seek to manage and mobilize an increasing amount of data, a new five-year NSF Research Coordination Network in Undergraduate Biology Education (RCN-UBE) called Biodiversity Literacy in Undergraduate Education - Data Initiative (BLUE Data) will make the data more accessible to students. The project is bringing together biodiversity, data, and education specialists from Central Michigan University and Florida State University

to identify core biodiversity data competencies for undergraduates and integrate these competencies into introductory biology curricula. Natural history collections data are ever more relevant in biodiversity science and among the goals of BLUE Data are to develop strategies and exemplar learning materials, such as resources from UCMP's *Understanding Evolution* website to increase the data literacy skills across a broader community of undergraduates.



Lisa White on the right in New Zealand with teachers, photo courtesy Lisa White

### EPICC and the Kettleman Hills Collection (NSF)

**Target Group: K-16 teachers and the public**

The impacts of research collections at the UCMP are broadened by two NSF grants highlighted in previous newsletters - the EPICC (Eastern Pacific Invertebrate Communities of the Cenozoic) project and the transfer of the Kettleman Hills invertebrate collection from San Francisco State. EPICC - a partnership between the UCMP and eight natural history museums to digitize, photograph, and georeference more than a million specimens - shares the fossils and the field sites at which they were collected through virtual fieldwork experiences (VFEs). Together with colleagues at the Paleontological Research Institution we are using high-resolution images of outcrops, specimen photographs, and interactive maps of each site adding context and opportunities for public outreach. Fossils from the Kettleman Hills collected by students at San Francisco State and transferred to UCMP are among those featured in the first EPICC VFE. 🐛

### Who is UCMP?

**Director:** Charles Marshall

**Assistant Director:** Lisa White

#### Curators:

Anthony Barnosky*	Jere Lipps*
Roy Caldwell*	Cindy Looy
William Clemens*	Charles Marshall
Seth Finnegan	Kevin Padian
Carole Hickman*	Leslea Hlusko
Tim White	David Lindberg*
James Valentine*	

#### Curatorial Associates:

Walter Alvarez	Lynn Ingram
----------------	-------------

#### Admin. Assistant:

Chris Mejia

#### Museum Scientists:

Erica Clites	Patricia Holroyd
Diane Erwin	Cristina Robins

#### Education & Public Outreach:

Jessica Bean	Helina Chin
Trish Roque	Anna Thanukos

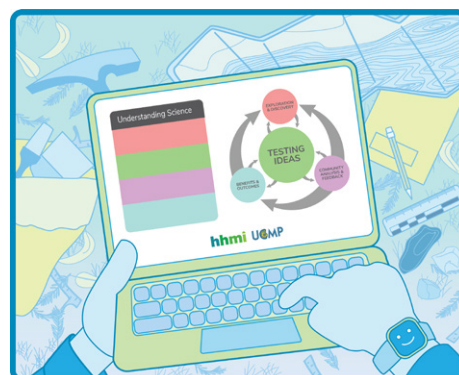
Edited by Lisa White

Layout & graphics by Helina Chin

For the broader UCMP community, visit the UCMP website: [www.ucmp.berkeley.edu](http://www.ucmp.berkeley.edu); Understanding Evolution: [www.understandingevo.org](http://www.understandingevo.org); and Understanding Science: [www.understandingscience.org](http://www.understandingscience.org)

\*Emeritus/a

### Upcoming Web Resources in Education & Outreach



New Understanding Science "How Science Works" Flowchart.

A new suite of online educational resources, tools and modules will be soon be available from the UCMP. In partnership with Howard Hughes Medical Institute (HHMI), UCMP has developed a new interactive version of the *Understanding Science* "How Science Works" Flowchart. This new web tool can be found at [www.understandingscience.org](http://www.understandingscience.org). The UCMP Education and Outreach team is also working on a redesign of the UCMP website, [www.ucmp.berkeley.edu](http://www.ucmp.berkeley.edu), nearly 25 years after its initial launch. And finally, adding ...continued on Education and Outreach Page 7



## CalDay 2018 celebrating Berkeley's 150th Birthday

April 21st was a beautiful sunny day - perfect for **CalDay 2018** - the annual campus open house event. This particular CalDay was special as the campus continued celebrating its sesquicentennial, the 150th anniversary of UC Berkeley's founding. The campus and UCMP expected a fun, but busy, day.

UCMP provided a myriad of displays and events starting with both our life-sized cast of *Tyrannosaurus rex* and a human-sized version of *T. rex* (performed by graduate student **Eric Holt**) greeting our visitors as they entered the Valley Life Sciences Building (VLSB). At the T-shirt table, we featured new Harley's *Triceratops* shirts based on the baby *Triceratops* found by **Harley Garbani**, friend and collaborator of UCMP's **Bill Clemens**. We also had ginkgo fossil shirts illustrated by **Dave Smith** and buttons at the swag table.

Museum Tours and Fun with Fossils were as popular as ever and in the

courtyard with other Berkeley Natural History Museums, we featured fossils under the theme of "*Armor and Flight*." In the Fishbowl we displayed "*Mega Mammals and their Mega Impacts*." **Cristina Robins** and her team presented fossil whale skulls from the ongoing SFPUC Calaveras Dam site. This collection was recently featured by several local Bay Area news outlets. Also featured were fossil mammoth teeth and fossilized sloth coprolites related to current research being conducted by graduate student **Nick Spano** in the Looy Lab.

Our lecture series this year focused on "*New Directions in Science*" and featured **Adiël Klompmaker**, Finnegan lab post-doctoral scholar and graduate student **Jeff Benca** of the Looy Lab. Also of note, Assistant Director **Lisa White** and Professor **Leslea Hlusko** were featured on a Women in STEM panel called "*Expanding Her Potential*" hosted by local science communicator

CaT Bobino. The panel provided a space for discussion about career paths for young women and their futures as scientists. And with that, CalDay came to an end. This UCMP tradition continues to provide fun and educational events to the campus and the Bay Area community at large. We can't wait to see you next year! 🐾



**Top left:** Grad student Nick Spano with a fellow animal hat enthusiast. **Top right:** Grad student Cat Taylor helping to identify fossils in Fun with Fossils, photo credit Jun Ying Lim. **Bottom left:** Grad student Daniel de Latorre shows off the wing span of a pterosaur, photo credit Lauren Fowler.

**Top:** Professor Emeritus Bill Clemens showing off the whale skull in process of preparation at the Mega Mammals display, photo credit Pat Holroyd. **Middle:** Jeff Benca presenting his talk on UV Radiation at the End Permian Extinction, photo credit Jun Ying Lim. **Bottom:** Lisa White and Leslea Hlusko participating in "Expanding Her Potential" Women in STEM panel, photo credit Lauren Fowler.



## Faculty in the Spotlight

**Top:** Seth Finnegan at CalDay 2018, photo credit Lauren Fowler.

**Bottom:** Cristina Robins and Diane Erwin accepting the 2017 Lab Safety award from VCR Randy Katz, photo courtesy of Diane Erwin.

Congratulations to newly-tenured Associate Professor/curator **Seth Finnegan**! Seth will be honored at the GSA Annual Meeting this fall with the 2018 Paleontological Society's Charles Schuchert Award. The award honors an early career scientist whose paleontological work reflects excellence and quality, and is among the most prestigious awards an early career paleontologist can receive. Seth's research on the fossil record of marine invertebrates is highly integrative, relying on field collections, geochemical observations, and statistical analyses to unravel the drivers of macroevolutionary change on a variety of timescales, from late Neoproterozoic to present day.

the Paleocene-Eocene thermal maximum (PETM) appeared in April in PaleoBios (<https://escholarship.org/uc/item/42b5m4kn>).

UC Herbarium (UCH) curator Carl Rothfels, UCMP and UCH curator **Cindy Looy**, and two collaborators (Nathalie Nagalingum of the California Academy of Sciences, and Michael Sundue of the University of Vermont) have received funding from the National Science Foundation (NSF) for an ambitious project examining vascular plant evolution. Their goals are to determine the relationships among the major lineages of all vascular plants, extant and fossil ones, and generate a timescale of their evolution. 🌱

During a research visit to Paul Valentich-Scott and the Santa Barbara Museum of Natural History **Carole Hickman** discovered some important living and fossil mollusks in the collections. She was interviewed by Owen Duncan for a blog exploring her research, the nature of science and collections, and what happens behind the scenes in a natural history museum: <http://www.sbnature.org/publications/blog/2/posts/50/sbnature-blog>

Hickman's paper describing and illustrating UCMP fossils of a relict Mesozoic gastropod survivor in an Oregon subduction zone during



## Staff Updates

Senior Museum Scientist **Erica Clites** reports we reached an important milestone in our EPICC project by cataloging over 36,000 new specimens of Cenozoic marine invertebrates from the eastern Pacific! All specimen records are live in the UCMP database ([ucmpdb.berkeley.edu](http://ucmpdb.berkeley.edu)) as well as at data aggregators like iDigBio (<https://www.idigbio.org/portal/search>). In March, the first Virtual Field Experience module was launched transporting teachers, students and anyone interested to the Kettleman Hills of Central California to explore the fossils, sedimentology and geology found there (<https://epiccve.berkeley.edu/kettleman-hills>). Several EPICC student employees are graduating this year and headed off to other adventures. EPICC project assistant, **Lillian Pearson**, has left UCMP to start graduate school at the University of Southern Mississippi this fall. The expertise and contributions of these student researchers to the project will be sorely missed, but we wish them well in their future endeavors!

**Mark Goodwin** co-authored a paper with Royal Ontario Museum colleague David Evans and his graduate student Mateusz Wosik on a nestling-sized skeleton of the duck-billed dinosaur, *Edmontosaurus*,

which made the cover of the *Journal of Vertebrate Paleontology*. The skeleton represents the earliest ontogenetic stage of this hadrosaur skeleton and was discovered by **Harley Garbani**, a long-time field associate and friend of the UCMP. Harley sadly passed away in 2011 but his contributions to vertebrate paleontology and our collections from many summers of working with **Bill Clemens** and crews in Montana continue to impress and make a difference.

In February 2018, UCMP received the 2017 Excellence in Laboratory Safety Award for the large field sciences category given by the UC Berkeley campus' Department of Environmental, Health, and Safety. UCMP lab managers **Diane Erwin** and **Cristina Robins** were honored to accept the award from Vice Chancellor of Research Randy Katz. 🐾

## What's New in the Collections

### iDigBio Annual Conference at UC Berkeley

The Berkeley Natural History Museums hosted the second annual Digital Data in Biodiversity Research Conference (iDigBio Conference). Senior Museum Scientist **Pat Holroyd** was on the planning team with staff from the Museum of Vertebrate Zoology, which welcomed over 240 participants from around the globe, coming together to discuss how best to manage and utilize natural history data. Through the EPICC project, UCMP is a partner and data contributor. **Lisa White** hosted a pre-conference workshop on "Engaging K-12 Audiences with Biodiversity Data through Advancing Digitization for Biodiversity Collections."

### Thematic Collections Network grant awarded

Carl Rothfels, **Cindy Looy** and **Diane M. Erwin**, will lead the UCMP's and Jepson Herbaria's collaboration with 33 museums and herbaria from around the country to digitize



**Top:** Fossil *Osmunda* pinnules from the Eocene-Oligocene (34 million year-old) Badger's Nose locality in the Warner Mts., Modoc Plateau, California (UCMP 393085), photo credit: Diane Erwin. **Left:** Laura Mackenzie works on a whale skull during the KPIX visit, photo credit Helina Chin. **Right:** Kathy Zoefeld, Ken Gourley, Lillian Pearson, Katie Berlin, Don Pecko, Paula Gomez and Erica Clites at Pt. Richmond, photo credit Helina Chin.

~1.6 million pteridophyte specimens (ferns and other spore-bearing vascular plants) over the next three years. The Pteridological Collections Consortium (PCC) project is one of the latest to be funded by NSF's "Advancing the Digitization of Biological Collections Thematic Collections Network" program (ADBC-TCN, NSF DBI-1802504). It will be the first such network to digitize fossils and extant natural history collections.

### Calaveras Dam Updates

The prep lab and the Calaveras dam site project are now running at full speed and the fossils received in partnership with SFPUC are the most significant Bay Area fossils found in decades. **Cristina Robins** is supervising eight undergraduates, one graduate student, and one volunteer on this effort. Thus far, the

team has discovered at least one new species of fossil baleen whale, over 20 other whale skulls in various states of preparation, and over 2,000 other fossil vertebrates, invertebrates, and paleobotanical specimens to sort, identify, prepare, accession, and catalog. It is quite an accomplishment as we mark the halfway point of the two-year project! The project has received a significant amount of press and after a front page feature in the San Jose Mercury News, a chain reaction of press stories followed during the spring semester. The Calaveras fossils and the UCMP prep lab have been featured on local news stations KPIX, KTVU, and NBC Bay Area and also received national coverage on CNN. Links to the news features can be found on our online newsletter at <http://www.ucmp.berkeley.edu/about/ucmpnews/index.php> 🐾

## Student Honors

Congratulations to the UCMF graduate students who finished this spring: **Jeff Benca, Dori Contreras, Jun Ying Lim, Ashley Poust, Rosemary Romero** and **Camila Souto**. We wish you well in your adventures as post-docs, working with big tech companies and beyond!

**Daniel de Latorre, Peter Kloess, and Renske Kirchholtes** were honored with Outstanding Graduate Student Instructor Teaching Awards during the spring semester.

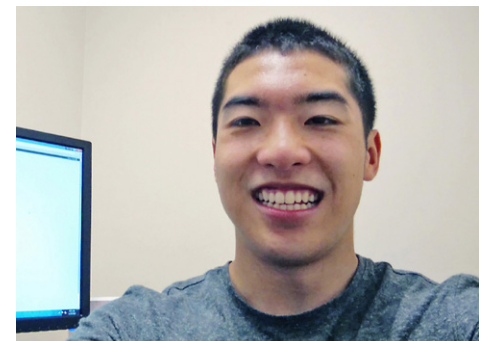
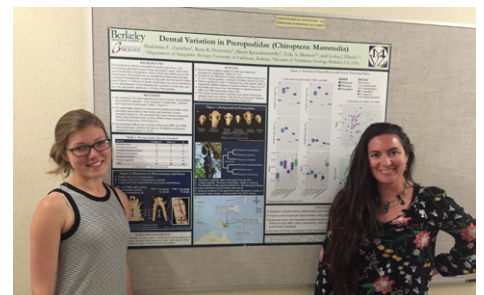
**Sara ElShafie** organized the "Science Through Narrative: Engaging Broad Audiences" Symposium at the January 2018 Society for Integrative & Comparative Biology Meeting. The symposium featured presenters from broad scientific fields and multiple disciplines in arts and entertainment.

In March 2018, Sara ran a new public workshop, "Visual Storytelling for Science Communication," with two collaborators from Pixar - Production Designer Steve Pilcher and Art Director Matt Nolte. The workshop drew an audience of over 250 and was sponsored by the CLEAR (Communication, Literacy & Education in Agricultural Research) and SLAM (Science Leadership and Management) programs at UC Berkeley.



**Tesla Monson** accepted a postdoctoral position in the Department of Anthropology at the University of Zurich in Switzerland. Her project will use microCT-scanning to quantify the internal morphology of postcanine dentition with the aim of reconstructing human population movement in the Quaternary. During the spring semester Madeleine Zuercher, a student Tesla mentored in the Hlusko Lab, won Best Poster in Ecology and Evolution at the 2018 West Coast Biological Sciences Undergraduates Research Conference for her work on dental variation in megabats.

Looy Lab students **Nick Spano** and **Ben Muddiman** were each awarded a 2018 GSA Graduate Student Research Grant in support of their respective dissertation projects.



**Top:** Commencement 2018: Cindy Looy, Charles Marshall, Ashley Poust, Camila Souto, Jun Ying Lim, Jeff Benca, Dori Contreras and Ivo Duijnste. **Left top:** Third from left Daniel de Latorre, Peter Kloess and Renske Kirchholtes acceptance of Outstanding Graduate Student Teaching Award, photo courtesy of Peter Kloess. **Left middle:** Madeleine Zuercher and Tesla Monson at the winning poster, photo courtesy Tesla Monson. **Left bottom:** Hiep Nguyen selfie! **Bottom right:** Sara ElShafie and 2018 SICB Science Through Narrative Symposium participants at the Walt Disney Museum, photo credit Helina Chin. **Opposite:** Larry Taylor at Los Medanos College, photo courtesy Larry Taylor.



Congratulations to UCMP graduate student **Larry Taylor** who received a \$2,500 grant from the Paleontological Society to make paleontology more accessible to community college students! During the 2018-19 academic year, Larry and UCMP graduate students will utilize a wide array of fossils to tailor workshops for specific community colleges and address the instructional needs of classes as expressed by the community college faculty. Larry piloted the program at Los Medanos College and City College of San Francisco last year.

predation in mollusks from both sides of the Isthmus of Panama.

Congratulations also to undergraduate **Hiep Nguyen** (BA in Integrative Biology class of 2018) for receiving the Marian Diamond Award. This award recognizes students for their high academic achievement and leadership in research, teaching and community service. Hiep was selected, in part, for his outstanding contributions as a UCMP undergraduate research apprentice on the NSF-funded Berkeley Fossil Insect PEN project. 🐛

Postdoctoral scholar **Adiël Klompmaker** worked with undergraduate students in the Finnegan Lab to collect and analyze Cenozoic decapod crustacean size variations and document evidence of

...continued from *Education and Outreach Page 2*

to our *Understanding Evolution* and *Understanding Science* web resources, the *Understanding Global Change* website and educational

## Friends of UCMP

We would like to welcome the following new or renewing members to our Friends of the UCMP!

### Benefactor

Marc \* & Linda Carrasco  
Maria Cranor \*  
Zhe-Xi Luo \* & Sharon Feng  
Jon Graff  
Stephen & Barbara Morris

### Sponsor

Ellen Essigmann  
Don Pecko  
Barry Roth\*

### Patron

Monica Albe  
Sean Ford \*  
Jere Lipps  
Jenny McGuire \*  
Carol Munson \*  
James & Harriet (Jo) Sanders  
Lisa D. White \*  
Thomas J. White \*

### Sustaining

Merrick Bush-Pirkle  
Blake Edgar  
Robert Fenerac \*  
David K. Johnson

### Donor

Ron Felzer\*  
Susumu Tomiya\*

\*alumna

## Become a Friend of UCMP!

Your gift to the University of California Museum of Paleontology will help support research, education, and public outreach at the largest, most interactive university paleontology program in the United States. To become a Friend of UCMP, please return the form below or go to <https://give.berkeley.edu/browse/?u=273>.

If you would like your gift to help build our endowments, please choose from the options below:

- \_\_\_\_\_ UCMP Main Endowment (FU0961000)
- \_\_\_\_\_ UCMP Education and Outreach Endowment (FW4101000)
- \_\_\_\_\_ Anthony Barnosky Graduate Student Support Endowment (FW8044000)

Name \_\_\_\_\_

Address \_\_\_\_\_

City \_\_\_\_\_ State \_\_\_\_\_ Zip \_\_\_\_\_

Phone \_\_\_\_\_ E-mail \_\_\_\_\_

resources are in development. Check back with us soon for updates on this exciting new project. 🐛

All membership fees and donations are tax-deductible to the limit allowed by law.

Please make checks payable to **UC Regents**. Mail your check and form to:

University of California Berkeley,  
Museum of Paleontology,  
1101 VLSB #4780,  
Berkeley CA 94720-4780

- \_\_\_\_\_ Benefactor \$1000
- \_\_\_\_\_ Sponsor \$500
- \_\_\_\_\_ Patron (annual) \$100
- \_\_\_\_\_ Sustaining (annual) \$50
- \_\_\_\_\_ Donor (annual) \$25
- \_\_\_\_\_ New \_\_\_\_\_ Renewal



University of California, Berkeley  
Museum of Paleontology  
1101 Valley Life Sciences Building # 4780  
Berkeley, CA 94720-4780

---

## Fall Edition

As Fall unfolds, the new school year brings both hope and trepidation. UCMP looks towards the future focusing on upcoming Education & Outreach projects and research being conducted at the museum; we also keep a cautious eye on the UC budget.



*T. rex high-fives young visitors in the VLSB courtyard, photo credit Lauren Fowler*

## Calendar of Events

### Every 1st Wed. of the Month

#### East Bay Science Cafe

Science talks in the evening at local venues. Check the link for more updates!

<http://scienceatcal.berkeley.edu>

### Every Tuesday at 11 am

#### UCMP Fossil Coffee

Weekly lectures given by UCMP and visiting speakers in the Museum of Paleontology

### Oct 26 to Nov 3

#### Bay Area Science Festival

Join the Bay Area science community at AT&T Park and other locations for a weekend filled with family friendly science!

[www.bayareasciencefestival.org](http://www.bayareasciencefestival.org)

The Newsletter Team at UCMP provides the news in a variety of formats.

If you are interested in receiving printed newsletters or email only, let us know!

Please provide your email address to Chris Mejia at [cmejia@berkeley.edu](mailto:cmejia@berkeley.edu)



University of California  
Museum of Paleontology  
[www.ucmp.berkeley.edu](http://www.ucmp.berkeley.edu)

## In this issue

Director's Letter.....	p.1
Education & Outreach .....	p.2
Cal Day 2018 .....	p.3
Faculty Spotlight .....	p.4
Staff Updates .....	p.4
Collections .....	p.5
Student Honors.....	p.6
Student Honors cont.....	p.7
Education & Outreach cont. ....	p.7
Friends of UCMP.....	p.7

Keep up with us on our website,  
Facebook, Instagram & Twitter!



@ucmpberkeley