

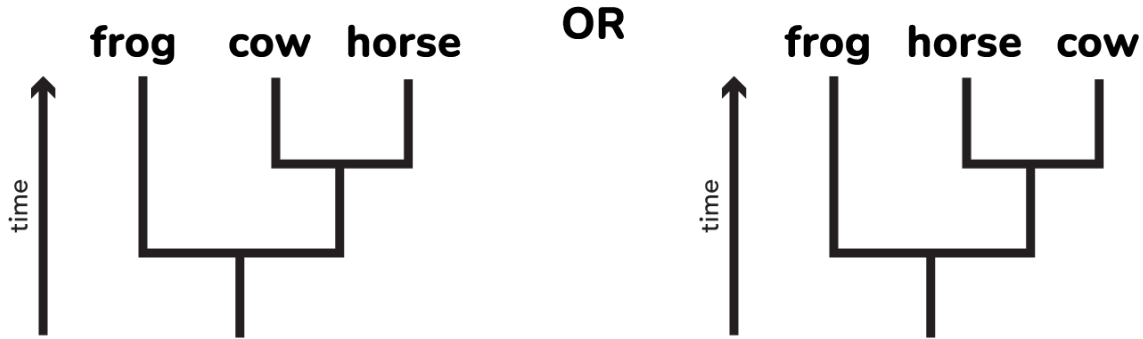
What did *T. rex* taste like?

Assessment Pre/Post-Test Key

1. What is a cladogram?

A cladogram is a branching diagram that illustrates evolutionary relationships between groups of organisms.

2. Draw a cladogram with a frog, cow and horse correctly placed.



3. Please circle the answer that best completes this statement: A “common ancestor” is:

b. one that is shared by two or more organisms.

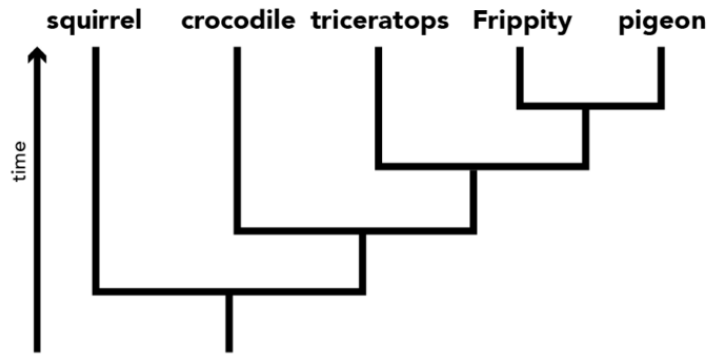
4. Read the following statements then answer the question below.

- A. All organisms inherit their features from their ancestors.
- B. Organisms resemble their most recent ancestors more closely than distant ancestors.
- C. Over time evolution occurs and new features appear.

Which of these statements are accurate?

C. All of the above.

5. Examine the following diagram and the statements that follow.



Statements:

- A. Crocodiles are more closely related to squirrels than to frippities.
- B. Frippities share a more recent ancestor with Triceratops than with Pigeons.
- C. Frippities probably laid eggs.
- D. All of these animals share the same ancestor.

Which of the statements are accurate?

C. C and D are correct.