

What did *T. rex* taste like?

Assessment Post-Test

Name _____

Class _____ Date _____

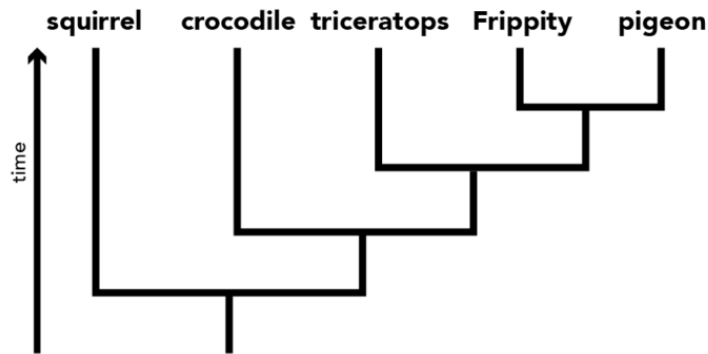
Directions: Please answer each of the following questions.

1. What is a cladogram?
2. Draw a cladogram with a frog, cow and horse correctly placed.
3. Please circle the answer that best completes this statement: A “common ancestor” is:
 - a. one that is very commonly seen in the fossil record.
 - b. one that is shared by two or more organisms.
 - c. one that has no distinguishing features and is therefore very “common.”
4. Read the following statements then answer the question below.
 - A. All organisms inherit their features from their ancestors.
 - B. Organisms resemble their most recent ancestors more closely than distant ancestors.
 - C. Over time evolution occurs and new features appear.

Which of these statements are accurate?

- a. A and C.
- b. B and C.
- c. All of the above.
- d. None of the above.

5. Examine the following diagram and the statements that follow.



Statements:

- A. Crocodiles are more closely related to squirrels than to frippities.
- B. Frippities share a more recent ancestor with Triceratops than with Pigeons.
- C. Frippities probably laid eggs.
- D. All of these animals share the same ancestor.

Which of the statements are accurate?

- a. A and C.
- b. B and D.
- c. C and D.
- d. A, B, C, and D.